



FARMESACO FZC (Reg. 17295 )

For Building Materials, Plastic Products and Industrial Engineering Solutions

## Adjustable Height Pedestals

Adjustable Height Pedestals make laying a floor very practical and simple. These pedestals rest on top of the waterproofing membrane or any other surface due to be paved. Following an initial rough adjustment, laying the chosen paving is made easier by the self-leveling head, which helps compensate differences in level. The adjustment key is then used to complete the installation with precise accuracy.

The floating paving system for exterior use provides a permanent solution to infiltration trouble encountered too often on terraces paved with glue-on tiles. This system is based on a wide range of special fixed or adjustable height supports, which are placed on top of the waterproofing layer.

If the waterproofing layer needs maintenance works, the paving can be easily removed and laid again.



## Proposed Sizes and Specs

Item Code	Height Range	Base Dia	Head Dia
SE 2	50-70mm	205mm	110mm
SE 3	70-120mm	205mm	110mm

- ◆ Laying Surface of the Base : 320 cmq
- ◆ Product is available in various heights

## Raw Material Blend

MOPLN EPC 40R- Recycled (Poly Propylene)

## Other Technical Specs

- Self-levelling head that automatically justifies slopes to 5%
- Manufactured from High Density Poly Propylene Blend
- Resistant to temperatures between -40° to 120°C
- Resistant to acids and ultraviolet deterioration
- Suitable to any self-supporting outdoor paving system
- Head with upper part of soft non-slip and anti-noise soft/flexible PVC shim
- Easy to remove Tabs



## Contact Details

am@farmesaco.ae --- sales@farmesaco.ae --- farmesaco@gmail.com --- TEL : 00971-527265680

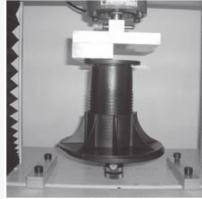
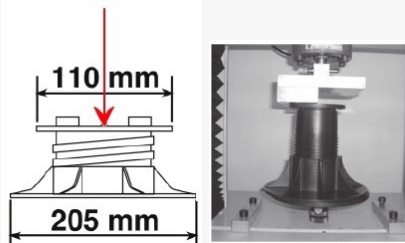
website : farmesaco.ae



FARMESACO FZC (Reg. 17295 )

For Building Materials, Plastic Products and Industrial Engineering Solutions

### Testing Method and Load Bearing Capacity



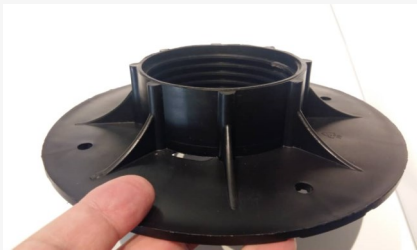
Machine in Test : Universal Test Machine — — Test Method : Compression

Test Result :

The specimen projects an average resistance against <<1200Kg(11,395N) with a deflection value of 5%

Note : Third Party Test Report can be provided if required.

### Actual Product Images



### Images for Illustration Purpose



### Contact Details

am@farmesaco.ae — sales@farmesaco.ae — farmesaco@gmail.com — TEL : 00971-527265680

website : farmesaco.ae